



**ORCHARD**  
HEALTHCARE  
GROUP

# Paddock Stile Manor

Welcoming residents for residential  
dementia and short stay care



# Welcome to Paddock Stile Manor

Choosing care for someone you love is never easy. It's a decision filled with emotion, hope, and a desire to find the very best support. We're glad that you're considering Paddock Stile Manor, and we're here to walk alongside you every step of the way.

Paddock Stile Manor is a bright, modern and welcoming home in Houghton-le-Spring, offering 24 hour residential dementia care and short-stay care, tailored to the person. The home features 40 comfortable en-suite bedrooms, all equipped with contemporary facilities, as well as relaxing communal spaces and private gardens.

But beyond the building itself, what truly matters to us is the people who live here - their stories, their personalities, and the things that make them feel at home. From the moment someone comes to live with us here, we take time to understand who they are and what brings them comfort, joy and purpose. We support not only their health needs, but

also their emotional and social wellbeing, helping them settle in and feel part of our community.

We believe life should be lived as fully and as normally as possible. That means focusing on what people can do, not what they can't. We encourage independence, celebrate individuality, and support each person to make choices that feel right for them. Our aim is simple: to help people live enriched, meaningful lives where they feel valued for exactly who they are.

Paddock Stile Manor is a sociable, friendly place where people spend time together, build new friendships and enjoy activities that matter to them. Whether it's a quiet moment, a shared laugh, or a lively event, there's always something to be part of. We're proud of our strong links with the local community too, bringing the outside world in, and helping people stay connected to the places and experiences they love.

“

*In the short time that I have visited the care home, I found the staff to be very pleasant and so caring towards the residents. My sister seems to be settled and well cared for, which gives me peace of mind.*

Sister of resident living at Paddock Stile Manor

Source: carehome.co.uk

”

## What makes Paddock Stile Manor special?



Fresh and delicious meals, cooked from scratch



We provide expert, round-the-clock care, tailored to the person



A friendly, highly skilled Care Team



Our residents take an active role in shaping life in the home through regular committee meetings and ongoing feedback

## Activities

There's always something enjoyable happening here. Everyone is free to choose how they'd like to spend their time, with support on hand whenever it's needed. Our indoor and outdoor spaces are designed for relaxation, socialising and pursuing hobbies, whether that's continuing something your loved one already loves, or discovering something new. And for those moments when they would prefer some peace and quiet, our cosy lounges offer a calm place to unwind.

We host a variety of events throughout the year, and each person can decide if they'd like to join in. From group trips and days out to visits from entertainers, there's always something to look forward to. We're always open to new ideas. If you have suggestions for activities or events, we'd love to hear them. Everyone plays a part in making our home a warm, vibrant place to live.

## Mealtime Experience

We know how important good food is, not just for health, but for comfort and enjoyment. Our talented kitchen team prepares nutritious, well balanced and tasty meals using quality, seasonal ingredients, and we cater for all dietary needs. People living in the home are encouraged to help shape our menus, ensuring meals reflect the tastes and preferences of our community. Whether it's a hearty home made pie or a light fruit sponge, our cooks take pride in creating dishes that feel familiar, comforting and delicious. A varied menu is available every day, along with snacks and fresh fruit that can be enjoyed at any time, day or night.

## Our Care

We understand the importance of creating a comfortable, nurturing and welcoming environment. Relationships matter deeply to

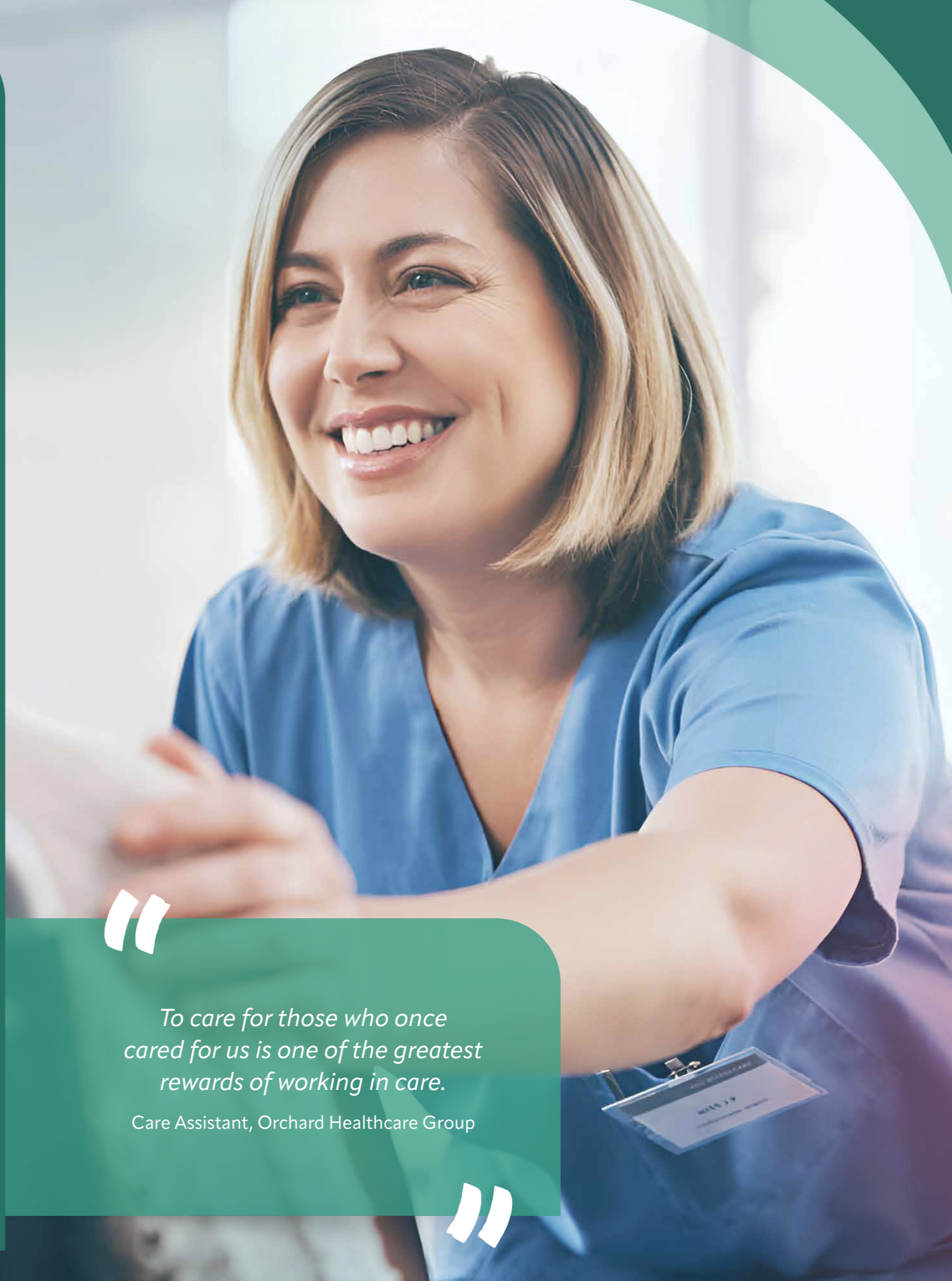
us, and we recognise the vital role family and friends play in maintaining a person's identity and sense of belonging. Our specialist dementia nursing care is delivered by qualified nurses and support workers, available 24 hours a day. Our team takes the time to really get to know each person - their story, their values, what brings them joy, and what helps them feel safe and understood. Working closely with individuals, families and friends, we develop a personalised care plan that reflects who they are and how they want to live.

## Making our home your home

People are at the heart of Paddock Stile Manor. We're proud of our dedicated team, who deliver highly personalised care with professionalism, kindness and respect. We work hard to create a home where each person feels valued, supported and able to enjoy a healthy, safe and fulfilling lifestyle. Bedrooms are bright, modern and thoughtfully furnished, each equipped with nurse call facilities for peace of mind. We warmly encourage people to personalise their rooms with photos, keepsakes and favourite belongings, anything that helps make the space feel truly their own.

## Our Friendly, Expert Team

Our focus is always on providing high quality care, tailored to each person. Training and coaching are central to our approach, and we invest heavily in our team's professional development to ensure everyone at Paddock Stile Manor has the skills and confidence to support each person with empathy, positivity and respect. We've created a homely, supportive environment not only for the people who live here but for the colleagues who work here too. As a result, many team members choose to stay with us for a long time, offering continuity, familiarity and trusted relationships for the people in our care.



“

*To care for those who once cared for us is one of the greatest rewards of working in care.*

Care Assistant, Orchard Healthcare Group

”



“  
*They took my mother in at a day's notice, and since she has been there, she has settled very well and we are very grateful for the care they are giving her.*  
Daughter of resident at Paddock Stile Manor  
Source: carehome.co.uk  
”

## How to find us

Philadelphia Lane, Newbottle, Houghton-le-Spring, Tyne & Wear, **DH4 4ES**

Tel: **0191 584 8159** Email: [paddockstilem.mgr@orchardhealthcaregroup.com](mailto:paddockstilem.mgr@orchardhealthcaregroup.com)

**Directions:** From Houghton-le-Spring town centre, head north-east and at the roundabout take the 1st exit onto Hillside Way/A182. At the next roundabout take the 2nd exit onto Newbottle Street/A182. Continue along the A182 and at the next roundabout take the 2nd exit onto Philadelphia Lane/A182 and the home is situated on the left.



## Visiting

Paddock Stile Manor is your home, you are able to welcome family and friends to visit you at any time.

## Find out more

For more information call: **0191 584 8159**  
visit: <https://orchardhealthcaregroup.com/our-homes/paddock-stile-manor-care-home-houghton-le-spring/>

## Other homes nearby



**Archers Court Sunderland SR3 3DJ**  
Tel: **0191 528 2526**



**Archers Park Sunderland SR3 3DJ**  
Tel: **0191 522 5977**

# The home of specialist care

Paddock Stile Manor Dementia Care Home in Houghton-le-Spring  
Philadelphia Lane, Newbottle, Houghton-le-Spring, Tyne & Wear, DH4 4ES

**T: 0191 584 8159**



[orchardhealthcaregroup.com](http://orchardhealthcaregroup.com)