



ORCHARD

HEALTHCARE
GROUP

Cherry Trees

Welcoming residents for residential,
residential dementia and short stay care



Welcome to Cherry Trees

Choosing care for someone you love is never easy. It's a decision filled with emotion, hope, and a desire to find the very best support. We're glad that you're considering Cherry Trees, and we're here to walk alongside you every step of the way.

Cherry Trees is a bright, modern and welcoming home, offering 24 hour residential care, dementia care and short-stay care, tailored to the person. The home features 66 comfortable en-suite bedrooms, all equipped with contemporary facilities, while our private gardens provide a popular space for relaxation.

But beyond the building itself, what truly matters to us is the people who live here - their stories, their personalities, and the things that make them feel at home. From the moment someone comes to live with us here, we take time to understand who they are and what brings them comfort, joy and purpose. We support not only their health

needs, but also their emotional and social wellbeing, helping them settle in and feel part of our community.

We believe life should be lived as fully and as normally as possible. That means focusing on what people can do, not what they can't. We encourage independence, celebrate individuality, and support each person to make choices that feel right for them. Our aim is simple: to help people live enriched, meaningful lives where they feel valued for exactly who they are.

Cherry Trees is a sociable, friendly place where people spend time together, build new friendships and enjoy activities that matter to them. Whether it's a quiet moment, a shared laugh, or a lively event, there's always something to be part of. We're proud of our strong links with the local community too, bringing the outside world in, and helping people stay connected to the places and experiences they love.

“

Cherry Trees provided my mum with a family. They entertained her, cared for her, comforted her and at the end, they were with her. They also cared for me.

Daughter of resident living at Cherry Trees

Source: carehome.co.uk

”

What makes Cherry Trees special?



Fresh and delicious meals, cooked from scratch



We provide expert, round-the-clock care, tailored to the person



A friendly, highly skilled Care Team



Our residents take an active role in shaping life in the home through regular committee meetings and ongoing feedback

Activities

There's always something enjoyable happening here. Everyone is free to choose how they'd like to spend their time, with support on hand whenever it's needed. Our indoor and outdoor spaces are designed for relaxation, socialising and pursuing hobbies, whether that's continuing something your loved one already loves, or discovering something new. And for those moments when they would prefer some peace and quiet, our cosy lounges offer a calm place to unwind.

We host a variety of events throughout the year, and each person can decide if they'd like to join in. From group trips and days out to visits from entertainers, there's always something to look forward to. We're always open to new ideas. If you have suggestions for activities or events, we'd love to hear them. Everyone plays a part in making our home a warm, vibrant place to live.

Mealtime Experience

We know how important good food is, not just for health, but for comfort and enjoyment. Our talented kitchen team prepares nutritious, well balanced and tasty meals using quality, seasonal ingredients, and we cater for all dietary needs. People living in the home are encouraged to help shape our menus, ensuring meals reflect the tastes and preferences of our community. Whether it's a hearty home made pie or a light fruit sponge, our cooks take pride in creating dishes that feel familiar, comforting and delicious. A varied menu is available every day, along with snacks and fresh fruit that can be enjoyed at any time, day or night.

Our Care

We understand the importance of creating a comfortable, nurturing and welcoming environment. Relationships matter deeply to

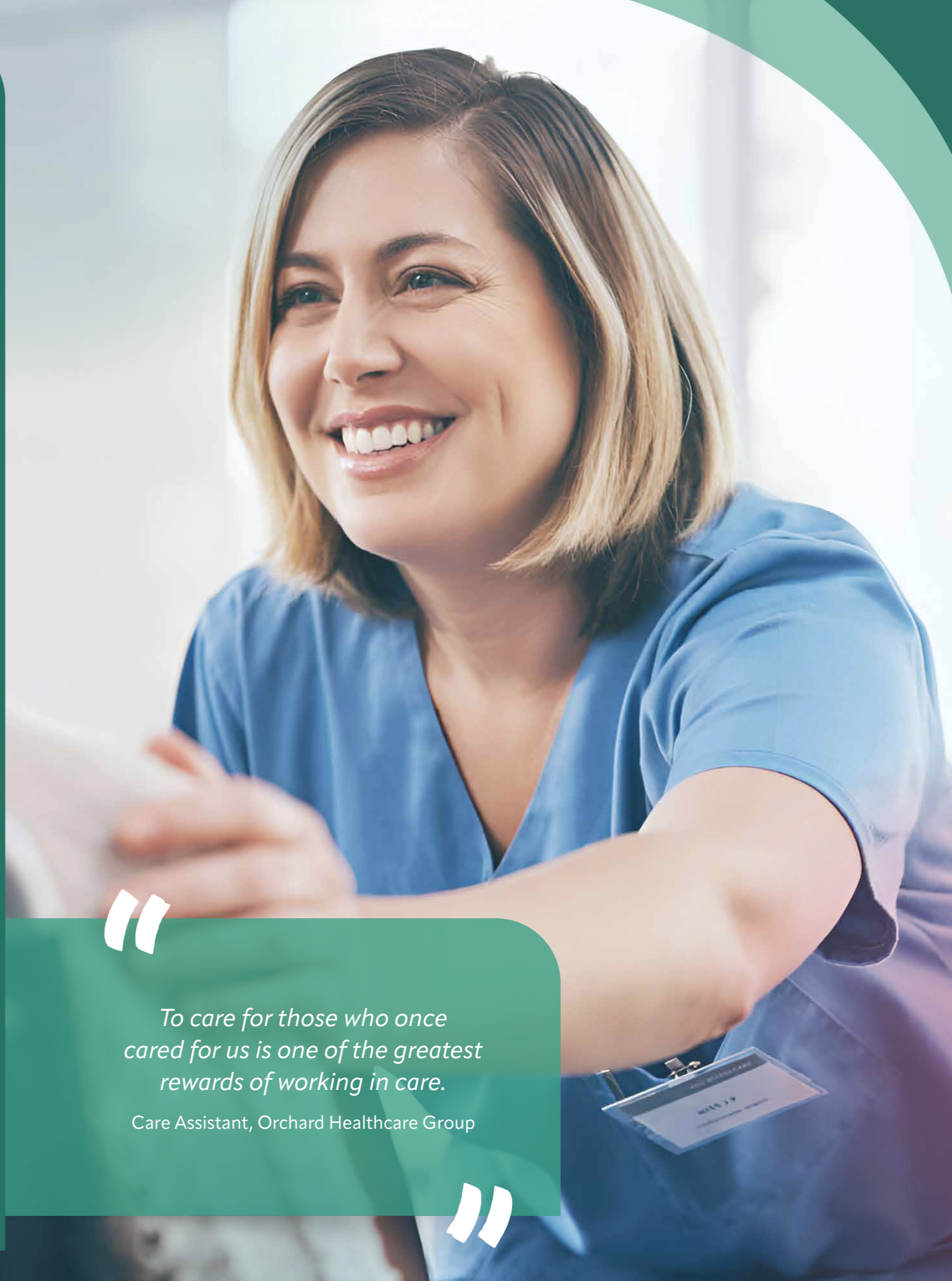
us, and we recognise the vital role family and friends play in maintaining a person's identity and sense of belonging. Our specialist dementia nursing care is delivered by qualified nurses and support workers, available 24 hours a day. Our team takes the time to really get to know each person - their story, their values, what brings them joy, and what helps them feel safe and understood. Working closely with individuals, families and friends, we develop a personalised care plan that reflects who they are and how they want to live.

Making our home your home

People are at the heart of Cherry Trees. We're proud of our dedicated team, who deliver highly personalised care with professionalism, kindness and respect. We work hard to create a home where each person feels valued, supported and able to enjoy a healthy, safe and fulfilling lifestyle. Bedrooms are bright, modern and thoughtfully furnished, each equipped with nurse call facilities for peace of mind. We warmly encourage people to personalise their rooms with photos, keepsakes and favourite belongings, anything that helps make the space feel truly their own.

Our Friendly, Expert Team

Our focus is always on providing high quality care, tailored to each person. Training and coaching are central to our approach, and we invest heavily in our team's professional development to ensure everyone at Cherry Trees has the skills and confidence to support each person with empathy, positivity and respect. We've created a homely, supportive environment not only for the people who live here but for the colleagues who work here too. As a result, many team members choose to stay with us for a long time, offering continuity, familiarity and trusted relationships for the people in our care.

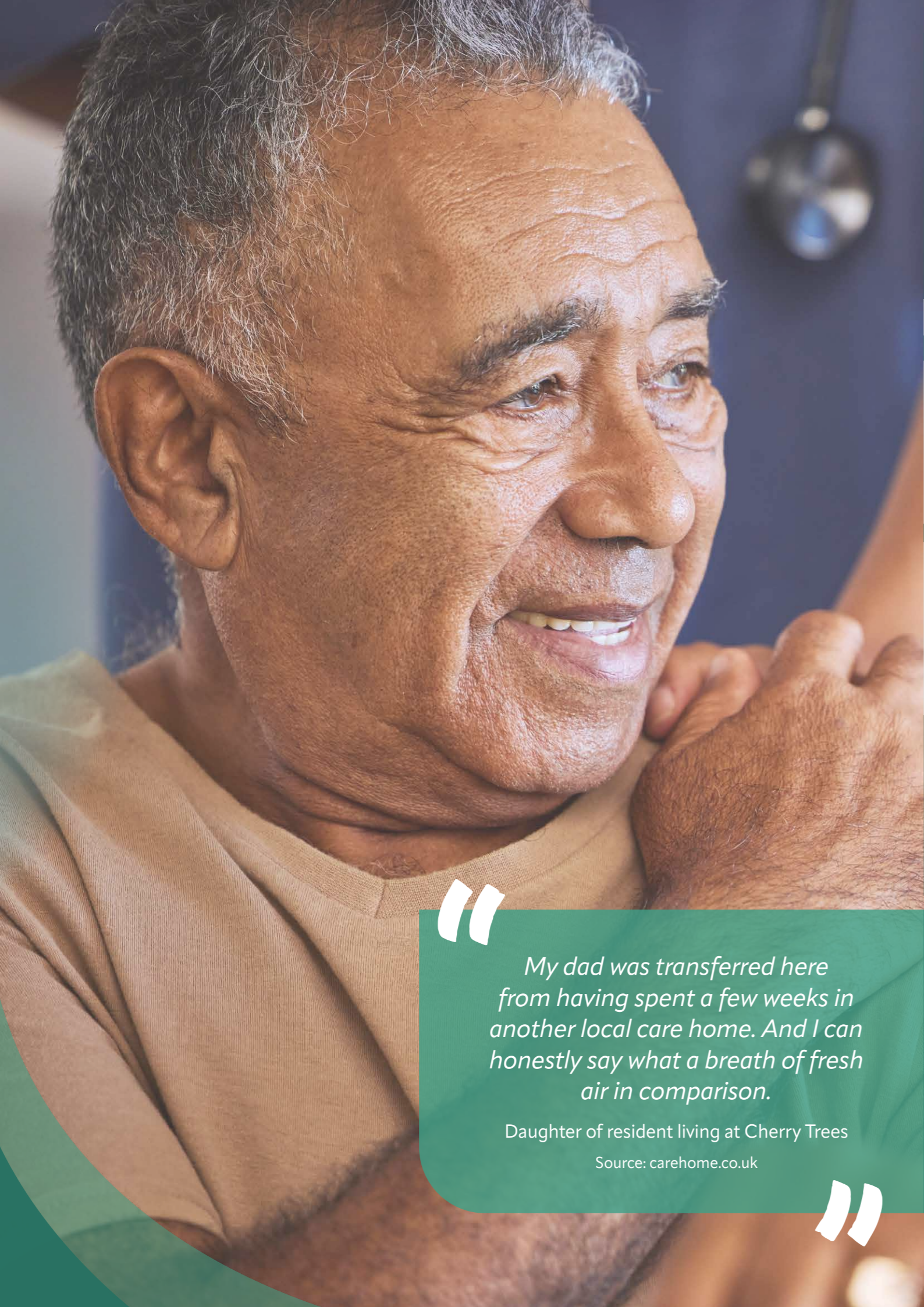


“

To care for those who once cared for us is one of the greatest rewards of working in care.

Care Assistant, Orchard Healthcare Group

”



How to find us

Simmonite Road, Kimberworth Park, Rotherham, South Yorkshire, **S61 3EQ**
Tel: **01709 550 025** Email: cherrytrees.manager@orchardhealthcaregroup.com

Directions: Cherry Trees is situated in Kimberworth Park, close to Rotherham town centre, well served by public transport and convenient for Sheffield and many local amenities, only minutes from the motorway network at J34/J35 of the M1.



Visiting

Cherry Trees is your home, you are able to welcome family and friends to visit you at any time.

Find out more

For more information call: **01709 550 025**
visit: <https://orchardhealthcaregroup.com/our-homes/cherry-trees-care-home-rotherham/>

“ My dad was transferred here from having spent a few weeks in another local care home. And I can honestly say what a breath of fresh air in comparison. ”

Daughter of resident living at Cherry Trees

Source: carehome.co.uk

Other homes nearby



Eckington Court Eckington **S21 4BF**
Tel: **01246 430 066**



Riverdale Chesterfield **S41 7LL**
Tel: **01246 275 003**

The home of specialist care

Cherry Trees Care Home in Rotherham
Simmonite Road, Kimberworth Park, Rotherham, South Yorkshire, S61 3EQ

T: 01709 550 025



[orchardhealthcaregroup.com](https://www.orchardhealthcaregroup.com)