



**ORCHARD**

HEALTHCARE  
GROUP

# Castleford Lodge

Welcoming residents for nursing,  
residential, dementia nursing and  
short-term respite care



# Welcome to Castleford Lodge

Choosing care for someone you love is never easy. It's a decision filled with emotion, hope, and a desire to find the very best support. We're glad that you're considering Castleford Lodge, and we're here to walk alongside you every step of the way.

Castleford Lodge is a bright, modern and welcoming home, offering 24 hour residential care, nursing care, dementia nursing care and short-stay care, tailored to the person. The home features 60 comfortable bedrooms, all equipped with contemporary facilities, while the private garden provides a popular space for relaxation.

But beyond the building itself, what truly matters to us is the people who live here - their stories, their personalities, and the things that make them feel at home. From the moment someone comes to live with us here, we take time to understand who they are and what brings them comfort, joy and purpose. We support not only their health needs, but also

their emotional and social wellbeing, helping them settle in and feel part of our community.

We believe life should be lived as fully and as normally as possible. That means focusing on what people can do, not what they can't. We encourage independence, celebrate individuality, and support each person to make choices that feel right for them. Our aim is simple: to help people live enriched, meaningful lives where they feel valued for exactly who they are.

Castleford Lodge is a sociable, friendly place where people spend time together, build new friendships and enjoy activities that matter to them. Whether it's a quiet moment, a shared laugh, or a lively event, there's always something to be part of. We're proud of our strong links with the local community too, bringing the outside world in, and helping people stay connected to the places and experiences they love.

“

*We have had our faith restored since my Mum went into Castleford Lodge last April. She is cared for correctly, fed at meal times and interacted with.*

Daughter of resident living at Castleford Lodge

Source: carehome.co.uk

”

## What makes Castleford Lodge special?



Fresh and delicious meals, cooked from scratch



We provide expert, round-the-clock care, tailored to the person



A friendly, highly skilled Care Team



Our residents take an active role in shaping life in the home through regular committee meetings and ongoing feedback

## Activities

There's always something enjoyable happening here. Everyone is free to choose how they'd like to spend their time, with support on hand whenever it's needed. Our indoor and outdoor spaces are designed for relaxation, socialising and pursuing hobbies, whether that's continuing something your loved one already loves, or discovering something new. And for those moments when they would prefer some peace and quiet, our cosy lounges offer a calm place to unwind.

We host a variety of events throughout the year, and each person can decide if they'd like to join in. From group trips and days out to visits from entertainers, there's always something to look forward to. We're always open to new ideas. If you have suggestions for activities or events, we'd love to hear them. Everyone plays a part in making our home a warm, vibrant place to live.

## Mealtime Experience

We know how important good food is, not just for health, but for comfort and enjoyment. Our talented kitchen team prepares nutritious, well balanced and tasty meals using quality, seasonal ingredients, and we cater for all dietary needs. People living in the home are encouraged to help shape our menus, ensuring meals reflect the tastes and preferences of our community. Whether it's a hearty home made pie or a light fruit sponge, our cooks take pride in creating dishes that feel familiar, comforting and delicious. A varied menu is available every day, along with snacks and fresh fruit that can be enjoyed at any time, day or night.

## Our Care

We understand the importance of creating a comfortable, nurturing and welcoming environment. Relationships matter deeply to

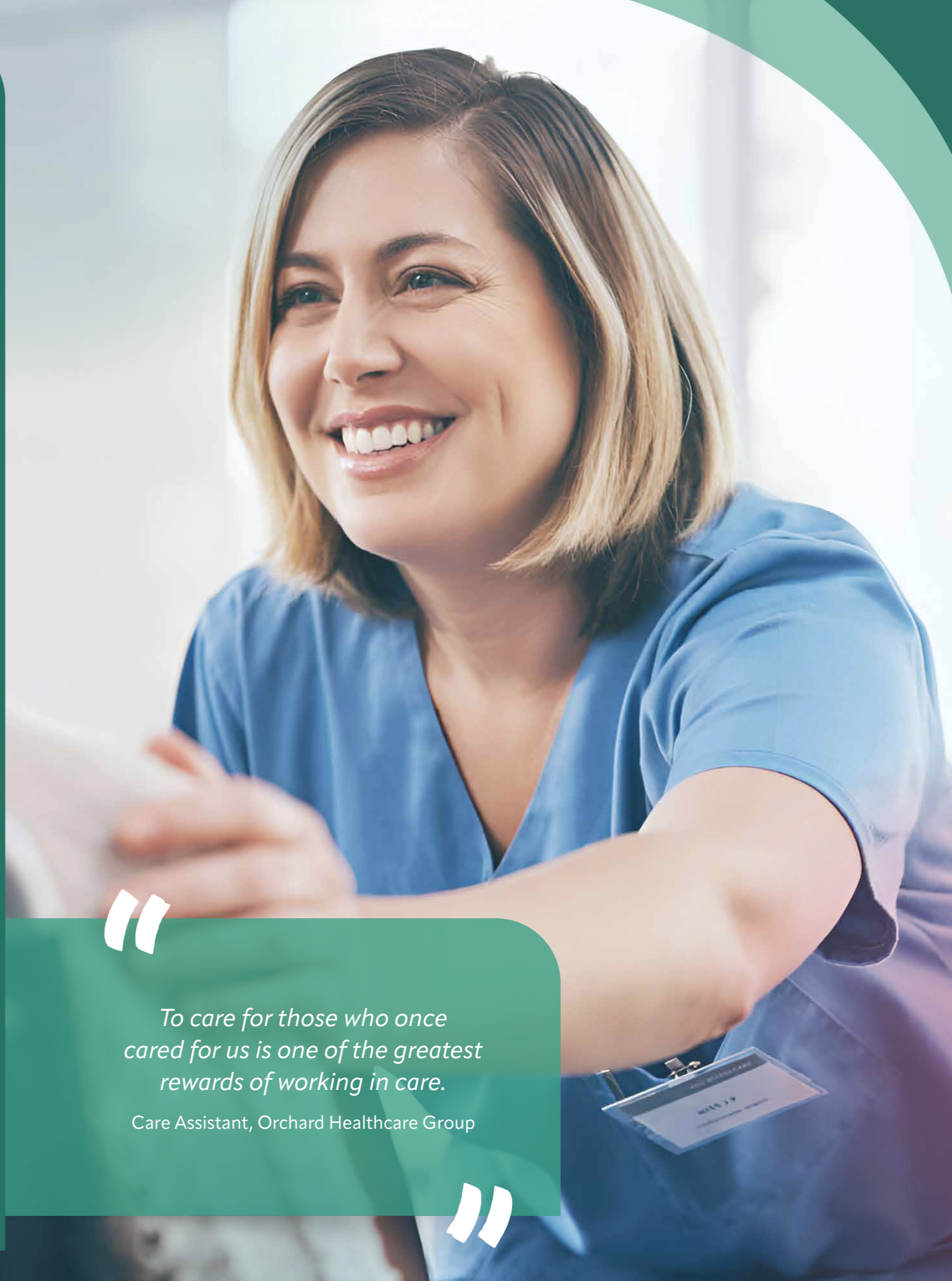
us, and we recognise the vital role family and friends play in maintaining a person's identity and sense of belonging. Our specialist dementia nursing care is delivered by qualified nurses and support workers, available 24 hours a day. Our team takes the time to really get to know each person - their story, their values, what brings them joy, and what helps them feel safe and understood. Working closely with individuals, families and friends, we develop a personalised care plan that reflects who they are and how they want to live.

## Making our home your home

People are at the heart of Castleford Lodge. We're proud of our dedicated team, who deliver highly personalised care with professionalism, kindness and respect. We work hard to create a home where each person feels valued, supported and able to enjoy a healthy, safe and fulfilling lifestyle. Bedrooms are bright, modern and thoughtfully furnished, each equipped with nurse call facilities for peace of mind. We warmly encourage people to personalise their rooms with photos, keepsakes and favourite belongings, anything that helps make the space feel truly their own.

## Our Friendly, Expert Team

Our focus is always on providing high quality care, tailored to each person. Training and coaching are central to our approach, and we invest heavily in our team's professional development to ensure everyone at Castleford Lodge has the skills and confidence to support each person with empathy, positivity and respect. We've created a homely, supportive environment not only for the people who live here but for the colleagues who work here too. As a result, many team members choose to stay with us for a long time, offering continuity, familiarity and trusted relationships for the people in our care.



“

*To care for those who once cared for us is one of the greatest rewards of working in care.*

Care Assistant, Orchard Healthcare Group

”



*The staff at the care home are lovely and nothing is too much trouble, they are all kind and helpful and treat the residents like friends.*

Daughter of resident living at Castleford Lodge

Source: carehome.co.uk

## How to find us

Oxford Street, Castleford, West Yorkshire, **WF10 5DF**

Tel: **01977 668448** Email: [castlefordlodge.mgr@orchardhealthcaregroup.com](mailto:castlefordlodge.mgr@orchardhealthcaregroup.com)

**Directions:** Leave the M62 (J32) and follow the A639 to Castleford. At the roundabout, take the 3rd exit onto Park Rd/A639/A6539. At the roundabout, take the 1st exit onto Front St/A6539/A656. At the roundabout take the 2nd exit onto Front St/A656 and turn left onto Lower Oxford St. Continue onto Middle Oxford Street and then turn left onto Crowther Place. Take the next right and Castleford Lodge is situated on the right.



## Visiting

Castleford Lodge is your home, you are able to welcome family and friends to visit you at any time.

## Find out more

For more information call: **01977 668 448**  
visit: <https://orchardhealthcaregroup.com/our-homes/castleford-lodge-care-home-castleford/>

## Other homes nearby



**Nesfield Lodge Leeds LS10 3LG**  
Tel: **0113 277 6880**



**Lofthouse Grange & Lodge Wakefield WF3 3QQ**  
Tel: **01924 822 272**

# The home of specialist care

Castleford Lodge Care Home in Castleford  
Oxford Street, Castleford, West Yorkshire, WF10 5DF

**T: 01977 668 448**



[orchardhealthcaregroup.com](https://www.orchardhealthcaregroup.com)